



MANNING
Architecture Interiors Planning

RTA TRANSFER HUB PROGRAMMING

RTA

PROJECT # 2023-PS-01

JULY 13, 2023

**Submitted By:
Manning, APC**

650 Poydras Street, Ste. 1250
New Orleans, LA 70130-6101
Phone: (504) 412-2000
Fax: (504) 412-2001

**Primary Contact:
Tighe Kirkland
Principal**

P: 504.412.2000
tbk@manning.xyz



July 13, 2023

New Orleans Regional Transit Authority

**RE: RTA Transfer Hub Programming
Project # 2023-PS-01, RTP # 2023-01
Manning, APC Proposal**

Dear Reviewer:

Understanding RTA's directive in alignment with the network redesign recommended in the New Links Plan to create transfer hubs that support an efficient operating environment, facilitate safe and comfortable transfers for riders, and provide a dignified riding experience, the Manning APC team is capable, experienced, and excited to assist RTA.

Manning APC's services have helped transit authorities spur ridership, improve the efficiency of operations, and serve the community with comfortable, safe, and welcoming facilities.

In addition to Manning's architectural and urban planning services, we are joined by our prequalified team members: Julien Engineering for civil/structural, Infinity Consulting Engineers for MEP, Dana Brown and Associates for landscape, and Palacio for cost estimating. We have added Terracon to our team as an environmental consultant for the FTA environmental requirements. We have the capabilities, resources, and relevant experience to deliver exceptional results. Several key factors distinguish this team:

- A long history of providing services to RTA
- Significant transit experience and relevant station and hub design
- Experience with federally funded transportation projects
- A deep understanding of the local neighborhoods affected
- A Project Manager with relevant experience working for the Dallas Area Rapid Transit Authority
- Community engagement leadership experience
- Experience incorporating public art into transportation design including RTA streetcar stops

Our authorized representative and primary contact for this effort is: Tighe Kirkland, Assoc. AIA, Principal-In-Charge, 504-412-2000, tbk@manning.xyz. We are available for any clarifications and to begin work upon your notification.

Thank you for the opportunity to submit this proposal and for your review.

Sincerely,
Manning, APC

A handwritten signature in blue ink, appearing to read "Wm. Raymond Manning", is written over a horizontal line. The signature is stylized and includes a large loop at the end.

Wm. Raymond Manning, FAIA
LEED AP BD+C
Founder | CEO

TABLE OF CONTENTS

Contractor Information	<i>1</i>
Project Understanding	<i>2</i>
Experience	<i>3</i>
Project Team	<i>5</i>
Proposed Project Plan	<i>16</i>
Cost Proposal	<i>18</i>

Contractor Information



ADDRESS

650 Poydras St., Ste. 1250
New Orleans, LA 70130

POINT OF CONTACT

Tighe Kirkland,
Principal in Charge
504-412-2000
tbk@manning.xyz

DATE SUBMITTED

July 13, 2023

PEOPLE

33

Employees

BUSINESS

38

Years in Business. Organized
as a corporation in 1985.

RECOGNITION

Excellence in Sustainability
Award

– USGBC Louisiana

Top 100 Green Design Firms

– Engineering News
Record

Design Intelligence Award

– Almanac of
Architecture & Design

Top 250 Design Firms

– Architectural Record

Texas & Louisiana Top 250
Design Firms

– Engineering News
Record

Design Awards

– AIA
– NOMA
– IIDA Delta Region

Manning, APC

Architecture, Interior Design, Planning

Clients with complex urban projects rely on Manning, APC to develop a vision for what's possible, align project goals with stakeholder expectations, and navigate demanding technical issues.

Manning has a thirty-eight-year history of designing solutions with a dedication to making each client's goals our own. We are a multi-discipline firm of talented staff members, providing fully integrated architecture, interior design, and planning services with a proven track record and earning national recognition. Within the framework of these disciplines, we offer tailored services that can guide a project from the spark of an idea through occupancy. Our clients have returned to Manning for multiple projects as a trusted partner for planning and design.

We engage with our clients, team members, and community partners by listening. It's this collaboration that energizes our creativity. We ask in-depth questions and build relationships that lead us toward a shared vision that is clearly expressed and realized. Through our tested process that includes meticulous project management and innovative thinking, we develop responsive solutions for each project, realizing each vision.

Our passion is improving quality of life through collaboration and design. Our work brings clients' visions to fruition while adding to the vitality of communities. When approaching projects, we not only meet the programmatic needs of our clients, but also consider the broader social issues at stake through design. We believe that when all elements of the built environment are designed with a focus on efficiency, sustainability, aesthetic beauty, and a sense of place, the community enjoys a better quality of life.

Project Understanding

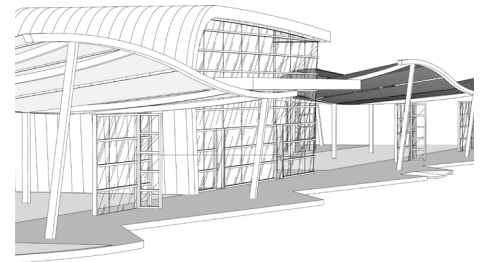
We understand RTA is seeking A/E professional services to support the development of programming for major and minor bus service transfer hubs located throughout the RTA service area. The selected team will be responsible for developing two to four facility types that could then be site adjusted to fit specific locations, resulting in five hubs. Manning’s approach would be to base the programming and facility design types on our significant experience with RTA and other transit authorities, research, and community engagement.

Manning is highly familiar with programming and design considerations for transit facilities through our transit work in Louisiana and Texas, including planning and design of transit stations and transfer hubs. Our work has included community and stakeholder engagement and has focused on providing riders with the best transit experience. We have incorporated safety features, ADA compliance, artwork, seating, weather protection, branding elements, and other amenities to serve patrons with a pleasant and efficient transit experience. Manning’s integrated team of architects, interior designers, urban designers, and landscape and engineering consultants will bring a high level of expertise to develop plans and designs that fit within the designated communities and respond to a full spectrum of customer considerations. In addition to riders, we will also address bus operator needs.

In line with RTA’s requirement to incorporate sustainability initiatives such as water management and renewable energy, Manning operates under a commitment to achieve the highest level of sustainability possible for each project, given its unique parameters. Along with our engineers, we will explore renewable energy options and their potential impacts on future operations. Water management is a necessary component of responsible design that we will fully address along with other sustainability features.

Our planning and landscape team will coordinate ROW and property identification efforts and how new transfer stations may be integrated into the community’s pedestrian and vehicular infrastructure with multi-modal connectivity. Plans will consider bicycle and pedestrian improvements, landscaping, and public art.

The Manning team has the expertise in each area of planning and design to meet RTA’s goal to establish the programming for five transfer hubs and complete the environmental requirements needed to advance the project. Our station programming and design typology will respond to each unique location, improving the transit experience and heightening a sense of place within the community.



Experience

RTA Downtown Transit Center Feasibility Study

Manning served as a consultant to Parsons Brinckerhoff in a feasibility study for a possible transit center in Downtown New Orleans. The study included extensive examination of more than a dozen potential sites for the transit center. In this evaluation, factors such as land ownership, level of ridership, capacity for buses, proximity to streetcar stops and local community expectations are some of the many considerations. Being able to understand and evaluate external circumstances while surpassing the owner’s expectations is a distinguishing factor of Manning.

RTA Accessibility Study

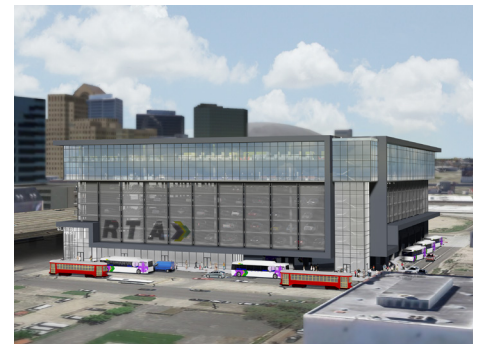
Manning, in association with GCR, was tasked by the RTA to survey all transit stops for compliance with the Americans with Disabilities Accessibility Guidelines (ADAAG). Upon completion of the survey, Manning provided an implementation timeline, with cost estimates, for correcting deficiencies. Manning also prepared a Transit Facility Design Guidelines document for the RTA to use as a tool for upgrading its stops. This document incorporates best practices found in ADAAG as well as the Public Rights-of-Way Accessibility Guidelines (PROWAG).

RTA New Orleans Streetcar Expansion Program

Manning was responsible for the architectural and urban design of streetcar shelters and stops, as well as supporting the project lead in planning aspects of the project. Responsibilities included design of stop shelters, existing and projected economic analysis of the feasibility of stop locations, and production of an “Urban Design Manual.” This document was included in the Environmental Assessment package required by TIGER funding. The inclusion of an art program in the design of the streetcar stops was important in integrating the shelters into their unique urban contexts and promoting cultural investment in the program. We also assisted in pursuing the TIGER Grant, alternate public funding sources for the completion of the program, public participation, and stakeholder outreach.

TramLink

TramlinkBR is the vision for a three-mile modern streetcar line from the north gates of LSU to Downtown Baton Rouge, linking multiple neighborhoods to a modern, high-capacity transit system. Manning designed the tram stops for the line: five pairs in the Downtown alignment and six pairs along the Nicholson Drive corridor, including designs for alternate configurations. Manning’s design team also provided a conceptual design for the tram’s Operations & Maintenance Facility. TramlinkBR will serve 2,200 passengers daily, and that number is projected to increase to 4,300 passengers per day by 2041, following new developments predicted to arise along the corridor.



DART Orange Line Extension

Manning designed the six passenger stations for DART’s Orange Line extension. Additionally, the firm coordinated public art and neighborhood components into the designs. The passenger stations are the most publicly visible part of the light rail system, and the projects entailed developing designs meant to engage riders while meeting the exacting standards of the client and the engineering system requirements of the line.



The extension addresses the needs of the growing residential and commercial populations of Irving, Texas and connects them to the extensive Dallas Area Rapid Transit network of light rail service. The extension serves 12,500 riders daily and contributes to a system-wide total increased daily ridership of 33,000 people. The extension of the Orange Line also provided a much needed connection from the downtown area to the Dallas/Fort Worth International Airport, making DART the largest light-rail operator in the United States, with 90 miles of track.

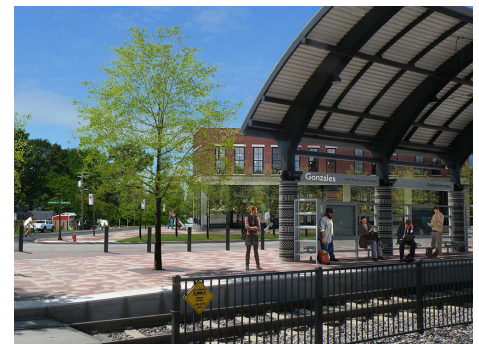
RTA Riverfront Streetcar Stations

The Riverfront Streetcar Line created a vital transportation system along the Mississippi River. The design for the 12 stops that form the Riverfront Streetcar Line is the result of a collaboration among artists, designers, engineers, developers, and government and regulatory agencies. These freestanding structures are inspired by the nineteenth century shed wharves which once lined the Mississippi River. Symbolic sculptures designed by local artists Thomas Mann and Robert Tannen are incorporated the pediments of many of the stations.



Baton Rouge to New Orleans Rail Study

Manning partnered with HNTB to create a strategic business plan for the implementation of intercity passenger rail service between Baton Rouge and New Orleans. The plan addresses the strategy needed to maximize the benefits of passenger rail by ensuring station locations are in close proximity to diverse residential and non-residential land uses, provide direct access to regional and local amenities, maximize connectivity within the existing street grid, connect to communities’ existing greenway systems, contain land available for development, and provide opportunities for place-making and community building.



Manning evaluated and developed design concepts and recommendations for proposed rail station locations with the goal of creating mixed-use multi-modal transportation hubs. Design recommendations were based on the goals of regional connectivity, walkability, sustainability, place-making, and feasibility.

BR CATS Bus Rapid Transit Transfer Station

The planning and design for a 1,400 square foot Bus Rapid Transit transfer center is the first of its kind in Louisiana. Manning led the planning assessment that considered location and feasibility, identifying pedestrian safety issues, right-of-way limitations, and utility impediments. Based on the planning study, Manning completed construction documents for the new high-capacity bus transfer center that will support a nine-mile, high-capacity connection that links Downtown to LSU and North Baton Rouge. The project is partially funded by a federal BUILD grant through the U.S. DOT.



Project Team



<p>Wm. Raymond Manning, FAIA <i>Strategic Oversight</i></p> <p>Tighe Kirkland, Assoc. AIA <i>Principal-in-Charge</i></p> <p>Craig King <i>Project Manager, QA/QC</i></p>	<p>Ryan Bertucci, AIA <i>Project Architect</i></p> <p>Travis Martin <i>Programmer/Urban Planner/ Community Outreach</i></p> <p>Nick Bertucci, Assoc. AIA <i>Architectural Support</i></p>
---	--



Civil/Structural Engineering

Kerwin Julien Sr., PE
Civil Engineer

James Green, PE
Civil/Structural Engineer

Arthur Malbroue, PE
*Civil Engineer / Infrastructure
Utilities*

MEP Engineering

John C. Lawrence
*Project Manager/Principal
Engineer*

Matthew E. Torres
Electrical Project Engineer II

Stephen Gholston
Mechanical Project Engineer I

Laura E. Kelly
Mechanical Project Engineer I

Landscape Architecture

Dana Nunez Brown
Managing Principal

Chris Africh
Principal/QA/QC



**FTA Environmental
Coordination**

Jennifer Trombley Peters
NEPA PM

Rachel Keane
QA/QC

Caitlin Gulihur
*Cultural Resources
- Section 106*

Cost Estimating

Justin Landry
Lead Cost Manager

Once awarded, we will assign the indicated staff and ensure that they are dedicated to this project and available as needed. An important element of our work plan is the continuity of staff through each phase, ensuring that goals, information, strategies, and decisions are consistent throughout the project's duration. We will assign Manning team members with special expertise in addition to those included in the pre-qualification application to best address the specific scope anticipated for this project. These additional team members, Craig King, Travis Martin, and Nick Bertucci will perform the work indicated herein and will not be substituted with other personnel or reassigned to other projects without RTA's prior approval.

Infinity Engineering Consultants has added John C. Lawrence, Matthew E. Torres, and Stephen Gholston to their key personnel team. Additionally, we have added Jennifer Trombley Peters, Rachel Keane, and Caitlin Gulihur from Terracon to address FTA Environmental Coordination. These team members will perform the work indicated and will not be substituted with other personnel or reassigned to other projects without RTA's prior approval.

Project Team

Key Individuals	Role/Title	Description of Responsibilities
Manning, APC		
Wm. Raymond Manning, FAIA	Strategic Oversight	Ray Manning will review the project's progress and ensure resources are available. He is also available for client communications at any time.
Tighe Kirkland, Assoc. AIA	Principal-in-Charge	Tighe Kirkland will have primary responsibility for the success of the project and will direct the team through all phases. She will staff the project appropriately and consistently, manage contracts, and coordinate the contract requirements and client expectations along with Manning's response, including programming, design, schedule, and budget. She will be the primary point of contact for RTA.
Craig King	Project Manager, QA/QC	Craig King is an experienced project manager with transit experience that including experience as a Dallas Area Rapid Transit project manager. His expertise will facilitate a through and expeditions process with results that meet RTA's goals. He will manage our team comprised of Manning staff and consultants. He will be responsible for QA/QC.
Ryan Bertucci, AIA	Project Architect	Ryan Bertucci is experienced with transit design and Transit Oriented Development projects. He will support the team with architectural design, sustainability strategies, regulation compliance and consultant coordination.
Travis Martin, AICP	Programmer, Urban Planner, Community Outreach	Travis Martin's urban design and community outreach experience will benefit the team. He will be responsible for ownership and ROW research, programming, urban design, and community outreach.
Nick Bertucci, Assoc. AIA	Architectural Support	Nick Bertucci will provide graphics and design support.
Julien Engineering & Consulting, Inc.		
Kerwin Julien, Sr., P.E.	Principal Engineer	As the principal-in-charge, Mr. Julien will oversee all civil and structural design and construction administration throughout the project.
James Green, P.E.	Civil/Structural Engineer	For this project, as the lead project manager, Mr. Green will be closely involved in the design and analysis of any necessary structural engineering services required.
Arthur Malbroue, P.E.	Civil Engineer/ Infrastructure Utilities	For this project, as project engineer, Mr. Malbroue will be involved in the design and analysis of any necessary civil and stormwater engineering services required.
Infinity Engineering Consultants, LLC.		
John C. Lawrence	Project Manager/ Principal Engineer	Mr. Lawrence is an experienced engineer and project manager with over 30 years of experience in the development of plans and specifications for commercial, industrial, and municipal electrical engineering assignments. His experience on this project will be to develop the electrical scope for the programming phase and lead the MEP team.
Matthew E. Torres	Electrical Project Engineer II	Mr. Torres is a licensed electrical engineer with experience in developing detailed designs for commercial and municipal electrical projects. His role on this project will be to develop the electrical scope for the programming phase of the project.
Stephen Gholston	Mechanical Project Engineer I	Mr. Gholston is a licensed mechanical engineer with over 12 years of experience in developing plans and specifications for commercial HVAC and Plumbing projects. His role on this project will be to develop the HVAC and Plumbing scope of for the programming phase of the project.
Laura E. Kelly	Mechanical Project Engineer I	Ms. Kelly is a licensed mechanical engineer with nearly 12 years of experience in developing detailed designs for mechanical engineering projects. Her role on this project will be to develop the plumbing scope of for the programming phase of the project.
Dana Brown & Associates, Inc.		
Dana Nunez Brown	Managing Principal	Dana Brown has over 40 years of experience managing projects of all sizes. Dana has experience in the design & overseeing the construction of transit related projects including North Boulevard Town Square and the Five Community Improvement Plans, both in Baton Rouge. Dana will oversee staff production and ensure schedules and deliverables are met.
Chris Africh	Principal/QAQC	Chris has experience working on a number of bicycle and pedestrian studies and street corridor redesigns in Baton Rouge, Jefferson Parish, Covington, and in New Orleans. Chris will serve as the Principal-in-Charge for DBA.
Terracon Consultants, Inc.		
Jennifer Trombley Peters	NEPA PM	Jennifer Trombley Peters is an experienced transportation related NEPA document preparer and project manager. She has worked on FTA and FRA projects, including those with individual 4(f) evaluation. She will manage the preparation of the NEPA documents and manage the subject mater experts who may be required to prepare portions of the required Categorical Exclusion documentation.
Rachel Keane	QA/QC	Ms. Keane has over 15 years of experience in preparing and managing NEPA documents within the Southeast, especially in Louisiana. Ms. Keane will be responsible for performing quality assurance / quality control reviews of NEPA documents (including Natural Resource surveys) that will be prepared in support of the RTA's projects.
Caitlin Gulihur	Cultural Resources - Section 106	Ms. Gulihur is a senior staff scientist and project manager. Her duties include conducting cultural resources fieldwork as a project archeologist and principal investigator, preparing reports, and managing digital spatial data using Geographic Information Systems (GIS). She has over 6 years of experience in working on transportation projects and performing cultural resources reviews within Louisiana.
Palacio Collaborative		
Justin Landry	Lead Cost Manager	Justin Landry will work with the Project Team (Owner, Design Team and Consultants) in ongoing budget planning and cost control efforts throughout the design process to provide cost estimates in conformance with State and Local requirements. Palacio Collaborative has weekly reconciliation meetings with various contractors across a multitude of projects affording continuous assessments of overall market trends, local conditions, labor and material availability, so factors which may adversely affect a specific design can be readily isolated and corrective action taken.

W. Craig King

Project Manager

wck@manning.xyz



Public and institutional clients count on project efficiency, schedule and cost control, and quality of design through Craig King's management of projects. With over twenty-five years of experience, he focuses on the transportation and education sectors. His familiarity with FTA regulations, Americans with Disabilities Accessibility Guidelines (ADAAG), and Crime Prevention through Environmental Design (CPTED) principles guides the development of project designs for highly responsive solutions and a clear process. For transit clients, his perspective incorporates agency and consultant viewpoints, having gained an intimate knowledge of agency standards as a project manager for Dallas Area Rapid Transit (DART), where for six years he managed public outreach initiatives and projects such as the level-boarding program.

As a project manager for Manning since 2009, Craig has been instrumental in delivering projects and meeting high-level technical standards.

PROJECT EXPERIENCE:

CapMetro

New Redline Commuter Rail Station

Baton Rouge Capital Area Transit System

Bus Rapid Transfer Station

East Baton Rouge Parish

MoveBR

Louis Armstrong New Orleans International Airport

Intermodal Station, on-going

CapMetro

New Redline Commuter Rail Station

Baton Rouge Capital Area Transit System

Bus Rapid Transfer Station

East Baton Rouge Parish

MoveBR

Trinity Metro

Signage and re-branding, 2019

Dallas Area Rapid Transit (DART)

Orange Line Light Rail Expansion, 2009

Green Line Light Rail Expansion, 2003 - 2008

EDUCATION:

Master of Architecture, 2009
The University of Texas at
Arlington

Bachelor of Science,
Architecture, 1988
The University of Texas at
Arlington



Travis Martin, MURP

AICP

Programmer, Urban Planner, Community Outreach

tlm@manning.xyz



Travis has in-depth planning experience in the non-profit and public sectors and has worked as a city planner in Houston and New Orleans. His expertise covers a full range with special interest in land use, comprehensive planning, transportation, pedestrian and bicycle planning, urban design, and stormwater management. He is adept at community engagement, funding sourcing, and project management.

Travis's journey into urban planning grew out of his experience as a Peace Corps volunteer. Stationed in Peru, he helped build sanitation facilities and organize trash collection in a small town. This immersive experience and exploration of the cities of Latin America steered him toward planning as an avenue to continue the work of improving communities. This goal fits neatly with the Manning objective of improving the quality of life in the communities where we live, work, and play, and Travis is excited to contribute to the firm's Transit Oriented Development projects.

PROJECT EXPERIENCE:

Dillard University

Master Plan, on-going

MoveBR

Project Management, 2021

Capital Area Transit System

Bus Rapid Transfer Station, on-going

Jefferson Parish

Covid Memorial Park, on-going

City of New Orleans

Harmony Circle, on-going

City of Monroe

Community Centers Vision Plan, on-going

East Baton Rouge Parish

Housing Design Standards, 2022

Earnest N. Morial Convention Center

Upriver Development, 2019

Claiborne Corridor/Armstrong Park

Master Planning, Stakeholder Engagement

EDUCATION:

Master of Urban & Regional Planning, 2012

University of New Orleans

Bachelor's Degree

History and Spanish, 2008

California State University-Long Beach

PROFESSIONAL REGISTRATIONS:

American Institute of Certified Planners (AICP)

AFFILIATIONS:

American Planning Association



Nicholas Bertucci, Assoc. AIA

Graduate Architect

nmb@manning.xyz



Nick Bertucci sees the relationship between the experience of a new city and what a design should impart: an experience that is a constant flow of impressions that leaves the visitor with a certain mood or feeling. A film buff, he finds reinforcement of that theme: each frame leading to the next, blending into a stream of impressions where mood is captured through set design, lighting, and other available techniques. He's found inspiration in cities near and far, such as Columbus, Indiana, a small town, unremarkable except for the many buildings designed by famous modernist architects who were commissioned to attract engineering talent to the local industry – a tractor factory. And Paris, where Le Corbusier's buildings instruct willing students in the art of establishing meaningful order through an orchestrated flow of spaces.

Manning's engagement in a variety of project types holds a particular interest for Nick. Civic and educational architecture encompass a wide range of programmatic elements that, like a city in some respects, serve the user population's many needs. Transportation and planning address another scale of design, supporting residents and visitors. All of these unique architectural and planning projects offer the opportunity to celebrate life.

Nick is a high achiever with a vast architectural library that supports his design investigations. Using cycling as a means to decompress, he focuses only on the present moment, taking in the outdoors. Newly relocated to Dallas, he's excited to get started on an immersive experience in his new hometown.

PROJECT EXPERIENCE:

Dallas/Fort Worth International Airport

- Terminal C Project Management, on-going
- Exit Lanes, on-going
- Security Fence, on-going
- Dry Pipe Replacement
- A18 Restroom Renovation

Cedar Crest Development Company

- Sportsplex of Texas, on-going

Carter Impact Studios & Entertainment

- Movie Studio, on-going

Jefferson Parish

- Covid Memorial Park, on-going

EDUCATION:

Bachelor of Architecture
Louisiana State University,
2022

AFFILIATIONS:

American Institute of
Architects (AIA)



John Lawrence, P.E.

Project Manager/Principal Engineer

jlawrence@infinityec.com

Mr. Lawrence holds over 32 years of experience in electrical engineering, project management, quality control and supervision of electrical design. Over the years, Mr. Lawrence has worked on numerous projects involving the installation of generators, lighting, and instrumentation. Mr. Lawrence's electrical engineering expertise comes a vast knowledge of power and control systems, SCADA technology, and electrical instrumentation for a wide range of utility infrastructure. As Infinity's Principal Electrical Engineer, Mr. Lawrence is responsible for electrical scope development, schedule coordination, budgeting, estimating, and cost control.

PROJECT EXPERIENCE:

Kawanee Sewer Lift Station Generator – Metairie, LA

Project manager for the addition of a backup generator to the Kawanee Street sewer lift station in Metairie, LA

Avondale Lift Station Backup Generator Addition – Avondale, LA

Project manager for the design and installation to add a new backup power generator for the Avondale lift station within Jefferson Parish, LA

Helios Ave. Sewer Lift Station New Generator – Metairie, LA

Project manager for the design and installation of a new backup generator to the Helios Sewer Lift Station in Metairie, LA

St. Bernard Port New Generator Installation – Chalmette, LA

Project manager for the design and installation of a new 250kW 208/120VAC, 3ph, 4W, backup generator at the Associated Terminals office building in Chalmette, LA

Jefferson Parish Water Department New Electrical Generators – Marrero, LA

Project manager for the design to upsize new backup generators from 750kW to 1MW to provide for the full redundant power of the system at the Jefferson Parish water plant in Marrero, LA

EDUCATION:

Bachelor of Science:
Electrical Engineering, 1990
University of New Orleans

REGISTRATION:

Professional Engineer
Louisiana No. 27941
Mississippi No. 13880



Matthew Torres, P.E.

Electrical Project Engineer II

mtorres@infinityec.com

Mr. Torres holds a Bachelor of Science in Electrical Engineering from Louisiana State University. Mr. Torres' previous experience includes large-scale capital projects in the oil & gas industry, nuclear power plants, and laboratory facilities. His electrical engineering focus is Power Systems and is proficient in power distribution design, specifying equipment, electrical system studies, and arc flash calculations.

EDUCATION:

Bachelor of Science:
Electrical Engineering, 2017
Louisiana State University

AFFILIATIONS:

Louisiana Engineering Society

PROJECT EXPERIENCE:

Avondale North Sewer Lift Station Generator – Avondale, LA

Lead Electrical Engineer responsible for the generator and power system replacement design for the lift station

NuScale Small Modular Reactor Standard Plant Design – Houston, TX

Project Engineer working with a team of multiple disciplines to develop the standard design for 460MWe NuScale Power Module Plant

Surplus Plutonium Disposition Project – Savannah River Nuclear Site, SC

Project Engineer Responsible for Lighting & Small power for the design of the Surplus Plutonium Disposition project

POTBA LyondellBasell – Houston, TX

Project Engineer working on a multidiscipline project team for the EPC of a \$3.1B plastics facility for LyondellBasell



Stephen Gholston, P.E.

Mechanical Project Engineer I

sgholston@infinityec.com

Stephen Gholston is a professional mechanical engineer with 20 years of experience in HVAC and plumbing systems, fire protection, drafting, and 3D modeling using Revit. He provides project management and development of mechanical engineering designs from inception through CA and the coordination of drawing and specification packages.

PROJECT EXPERIENCE:

Dwight D. Eisenhower, Boiler Replacement – NOLA Public Schools

Project Engineer responsible for mechanical engineering design of a hydronic heating boiler removal and replacement at a 50,000 SF elementary school. Project responsibilities included sizing calculations of the boilers, replacing expansion tank, adding air separator, buffer tank, boiler room piping reconfiguration, development of mechanical piping and equipment drawings as well as construction administration services.

Renovations – St. Augustine High School

Project Engineer responsible for construction administration services for the installation of new HVAC and Plumbing systems. Project included design and installation of a new variable refrigerant flow system for classroom, classroom laboratories and admin spaces. A VRF system was chosen to heat and cool spaces due to limited existing space constraints; ducting was routed from split dedicated outdoor air units through the hallway and into spaces to deliver fresh air ventilation.

COVID-19 HVAC Improvements – St. John the Baptist Parish

Engineer of Record responsible for assisting St. John the Baptist Parish administration with a grant application and subsequent award to improve HVAC systems of public facilities to mitigate the spread of COVID-19. Responsibilities included Project management and Engineer of Record responsible for Drawings and specifications of new HVAC systems. Project responsibilities included sizing cooling and heating loads, selecting equipment, and designing ductwork systems.

Tom Benson School HVAC – Jefferson Parish Schools

Engineer of Record responsible for plans and specifications of a new HVAC system for an 85,000 SF elementary school. Project responsibilities included sizing cooling and heating loads for all conditioned spaces as well as ventilation requirements to bring the building up to code. Rooftop units and a variable refrigerant flow system were chosen. Ducting was routed from rooftop units and dedicated outdoor air units through the hallway and into spaces to deliver fresh air ventilation.

EDUCATION:

Bachelor of Science:
Mechanical Engineering, 2000
Louisiana State University

AFFILIATIONS:

Professional Engineer
LA No. 41257
TWIC Holder



Jennifer Trombley Peters

NEPA PM

Ms. Peters has over eighteen years of preparing and managing National Environmental Policy Act (NEPA) documents and over twenty years of diverse professional experience specializing in environmental consulting, regulatory compliance and review, site investigation, technical writing, and site assessment. She has additional experience in site remediation and emergency response.

Her NEPA experience includes serving as a project manager, coordinator, and resource specialist. She specializes in water and hazardous material resources, and document author for Environmental Assessments and Categorical Exclusion documents for proposed actions including programs, utility (water/wastewater, roadways), and facilities. Clients include municipal/local government agencies (cities, counties, utilities), U.S. Air Force (USAF), U.S. Postal Service (USPS), Veterans Affairs (VA), and private renewable utility generators requesting funds under the USDA. Ms. Peters has worked for and with the FTA, FRA, state transportation agencies, USAF, USPS, U.S. Army Corps of Engineers, U.S. Navy, Bexar County, San Antonio Housing Authority, and various municipal (including city, state, and county) agencies.

Over the past six years at Terracon, Jennifer has become one of our subject matter experts in complying with and preparing NEPA documents and is our Central Operating Group NEPA Program Manager.

PROJECT EXPERIENCE:

Des Moines Area Metropolitan Planning Organization

Multi-modal Transloading Facility, Environmental Assessment
Des Moines, IA

RAISE Grant for Multimodal Transit Facility

NEPA Compliance, Yuma, AZ

Bexar County, Watson Road

TXDOT Categorical Exclusion, San Antonio, TX

University of Texas El Paso

Phase I and III University Avenue Enhancement, TXDOT Categorical Exclusion
El Paso, TX

Doña Ana County

Categorical Exclusion Checklists for Kit Carson Road, Doña Ana County, NM

EDUCATION:

Bachelor of Science,
Geography

Texas A&M University
College Station, Texas

AFFILIATIONS:

Air and Waste Management
Association



Rachel A. Keane

QA/QC

Rachel Keane is an experienced environmental services professional who received a Bachelor of Science in Limnology from the University of Central Florida in 1997. Since starting her career, Rachel has performed various field and laboratory services before concentrating on a career as an environmental consultant and professional. Since then, Rachel has acted as a contributing writer of documents required by the National Environmental Policy Act (NEPA) and Phase I Environmental Site Assessments (ESAs) and assisted in natural resources, including wetland delineations and threatened and endangered species surveys for various projects. Ms. Keane has completed +300 Phase I ESAs and has assisted in several Phase II ESAs.

Ms. Keane meets the qualifications of an Environmental Professional as defined by EPA's AAI. She has performed all aspects of Phase I ESAs, including site reconnaissance and report preparation for sites throughout the Southeast. The ESAs have ranged from parcels of land less than an acre to 100+ acres. These projects' clients include lending institutions, site owners, potential buyers, and land developers. Typical sites had vacant land in metropolitan areas for future development and developed sites planned for property transfer or redevelopment.

PROJECT EXPERIENCE:

New Orleans Redevelopment Authority

Acquisition, Construction, and Disposition Projects/Façade Renovation Projects – New Orleans, LA

Mobile County Commission

CDBG Program Consulting/Professional Services – Mobile, AL
2020 - Present

Louisiana Housing Corporation

Renovation, and New Construction, Various Grant Programs for 2016 Flooding Recovery – Statewide, LA

Habitat for Humanity St. Tammany West

Four Scattered Residential Lots and 10 Contiguous Residential Lots
– Mandeville and Covington, LA

Proposed V.B. Glencoe School Expansion

– Franklin, LA

EDUCATION:

Bachelor of Science,
Limnology, 1997
University of Central Florida

AFFILIATIONS:

U.S. Army Corps of Engineers
Federal Energy Regulatory
Commission
Federal Highway
Administration
Advisory Council for Historic
Preservation



Caitlin A. Gulihur

M.A., RPA

Cultural Resources - Section 106

Ms. Gulihur is a senior staff scientist and project manager, located in Terracon's Austin office. Her duties include conducting cultural resources fieldwork as a project archeologist and principal investigator, preparing reports, and managing digital spatial data using Geographic Information Systems (GIS).

Ms. Gulihur has assisted with archeological projects across Texas as a field technician, project archeologist, and principal investigator. She has worked on Phase I surveys performed in compliance with the Texas Antiquities Code (TAC) and Section 106 of the National Historic Preservation Act (NHPA). She has also worked at a curation facility certified by the Texas Historical Commission (THC), overseeing the curation of artifacts and records in compliance with the TAC.

PROJECT EXPERIENCE:

TAC Permit #30712

NBU Mission to Westpointe Waterline, Comal County

TAC Permit #30393

NBU Goodwin Lane, Comal County

TAC Permit #30153

Salado Trail Military to Monte Viejo, Bexar County

TAC Permit #9740

Salado Trail McAllister to Mud Creek, Bexar County

TAC Permit #9297

Wilshire Terrace Neighborhood Trailhead, Bexar County

EDUCATION:

MA in Anthropology, 2016
Texas State University,
San Marcos

BA in Anthropology, 2013
University of Texas at Austin

AFFILIATIONS:

Council of Texas Archeologists

Registered Professional
Archeologist

Travis County Archeological
Society



Proposed Project Plan

Task 1

Coordinate Outreach to Riders and Operators

Our Kick-off meeting with RTA and any stakeholders is our first task. We plan to discuss any further instructions from RTA, identify stakeholders, and agree upon the Project Work Plan. Then, Manning APC will coordinate outreach activities with any community engagement consultants and RTA marketing and communications team to gather detailed input from users of the transfer hubs, including riders, operators, and nearby residents and businesses, regarding their priorities for transfer hubs. In a recent similar effort to develop programming for Monroe's seven Community and Recreation Centers, Manning captured important programming data and broader information needed to make the projects most successful, including residents' perceptions of the facilities, patterns of use, and community needs that the centers could fulfill. Our intent is to fully understand needs and aspirations of community members and to translate the information into hub designs.

Deliverables:

- Coordination of surveys and community data requests
- Preparation of presentation graphics to facilitate discussion
- Documentation of programmatic data for each community

Task 2

Convene and Coordinate with Stakeholders

The Manning team will coordinate with stakeholders, including RTA, City, and State agencies, throughout the contract period to ensure that the resulting recommended programming for transfer hubs is supported by these entities. We will also review the 5 sites and begin outreach to FTA to coordinate environmental requirements.

Deliverables:

- Documentation of meetings with stakeholders identified by RTA
- Preparation of meeting materials and graphics as required for stakeholder meetings
- Updates to programmatic data if required by RTA, City, and State representatives

Task 3

Develop Transfer Facility Typology

The Manning team will articulate typologies of transfer facilities that respond to the range of needs presented for transfer facilities at community and stakeholder meetings. In addition to amenities, these typologies will also consider renewable energy and water management strategies integrated into current infrastructure. We will review typologies with RTA representatives and finalize typology concepts incorporating any review comments.

Deliverables:

- Drawings and documentation for transfer hub typologies that include suggested amenities and sustainability features
- Graphic and narrative materials for RTA's review
- Final typology documentation

Task 4

Establish Programming for Transfer Facilities

The Manning team will develop a final program of amenities that meets the goals described above and reflects the input gained from riders, operators, and stakeholders for the five following transfer hubs:

1. New Orleans East (Read Blvd at Lake Forest)
2. Gentilly Woods Hub
3. Broad Street at Canal Street
4. Elysian Fields at St. Claude Avenue
5. Carrollton Avenue at Claiborne Avenue

Deliverables:

- Drawings and documentation for transfer hub typologies that include suggested amenities and sustainability features
- Graphic and narrative materials for RTA's review
- Final typology documentation

Task 5

Provide Documentation and Layout Concepts

The Manning team will document and present their work from Deliverables 1 – 4, including a description of the programming for each transfer hubs and preliminary layout concepts showing how these program elements may appear at the transfer hub. The work of this task will incorporate program data and typologies into specific layout concepts for the five transfer hubs.

Deliverables:

- Document incorporating previous data and preliminary layout concepts for five transfer hubs
- Review with RTA
- Updated and final document incorporating any review comments

Task 6

Complete FTA Environmental Requirements

Our team will complete the necessary steps to meet FTA's environmental requirements to enable the RTA to proceed to the next phase, leading to the construction of these transfer hubs. For the purposes of this RTP, RTA and the Manning team assume that a CE checklist will be sufficient. In the event that a CE checklist is not sufficient, the RTA will establish a different mechanism to fund the environmental review activities.

Deliverables:

- Ongoing documentation of findings throughout the project process
- Draft CE Checklist for RTA's review
- Final CE Checklist

Cost Proposal

Labor Budget Detail

TASKS	KEY ACTIVITIES	STAFF	RATE	HOURS	LABOR BUDGET
Deliverable 1 - Coordinate Outreach to Riders and Operators	Kickoff meeting	Manning: Strategic Oversight	\$350.00	1.5	\$525.00
	Community engagement coord., participation: 5 mtgs.	Manning: Principal in Charge	\$275.00	8	\$2,200.00
	Presentation graphics	Manning: Project Manager	\$200.00	12	\$2,400.00
	Program documentation based on input	Manning: Project Architect	\$175.00	20	\$3,500.00
		Manning: Urban Planner	\$150.00	30	\$4,500.00
		Julien: Principal Engineer	\$220.00	2	\$440.00
		Julien: Project Manager	\$148.00	2	\$296.00
		Infinity: Projec Manager	\$235.00	2	\$470.00
		Infinity: Mech Engr I	\$190.00	2	\$380.00
		Infinity: Elec Engr II	\$170.00	2	\$340.00
		Dana Brown: Principal In Charge	\$250.00	5	\$1,250.00
		Dana Brown: Project Manager	\$200.00	5	\$1,000.00
		Palacio	\$200.00	0	\$0.00
	Deliverable 2 - Convene and Coordinate with Stakeholders	Meeting presentation preparation	Manning: Strategic Oversight	\$350.00	2
Coordination and meetings with stakeholders: 4 meetings		Manning: Principal in Charge	\$275.00	8	\$2,200.00
Meeting documentation and program updates		Manning: Project Manager	\$200.00	10	\$2,000.00
Research property ownership and ROWs		Manning: Project Architect	\$175.00	12	\$2,100.00
Site reviews		Manning: Urban Planner	\$150.00	20	\$3,000.00
		Julien: Principal Engineer	\$220.00	0	\$0.00
		Julien: Project Manager	\$148.00	0	\$0.00
		Infinity: Projec Manager	\$235.00	0	\$0.00
		Infinity: Mech Engr I	\$190.00	0	\$0.00
		Infinity: Elec Engr II	\$170.00	0	\$0.00
		Dana Brown: Principal In Charge	\$250.00	0	\$0.00
		Dana Brown: Project Manager	\$200.00	0	\$0.00
	Palacio	\$200.00	0	\$0.00	
TASK 3 - Develop Transfer Facility Typology	Typology development	Manning: Strategic Oversight	\$350.00	1	\$350.00
	Review with RTA	Manning: Principal in Charge	\$275.00	2	\$550.00
	Final typology documentation	Manning: Project Manager	\$200.00	8	\$1,600.00
		Manning: Project Architect	\$175.00	24	\$4,200.00
		Manning: Urban Planner	\$150.00	20	\$3,000.00
		Manning: Architectural Assoc. II	\$115.00	24	\$2,760.00
		Julien: Principal Engineer	\$220.00	2	\$440.00
		Julien: Project Manager	\$148.00	2	\$296.00
		Infinity: Projec Manager	\$235.00	0	\$0.00
		Infinity: Mech Engr I	\$190.00	2	\$380.00
		Infinity: Elec Engr II	\$170.00	2	\$340.00
		Dana Brown: Principal In Charge	\$250.00	1	\$250.00
		Dana Brown: Project Manager	\$200.00	6	\$1,200.00
		Palacio	\$200.00	0	\$0.00
TASK 4 - Establish Programming for Transfer Facilities	Final amenity development for 5 sites	Manning: Strategic Oversight	\$350.00	0	\$0.00
	Final program documentation submission for 5 sites	Manning: Principal in Charge	\$275.00	2	\$550.00
		Manning: Project Manager	\$200.00	8	\$1,600.00
		Manning: Project Architect	\$175.00	14	\$2,450.00
		Manning: Urban Planner	\$150.00	12	\$1,800.00
		Manning: Architectural Associate II	\$115.00	24	\$2,760.00
		Julien: Principal Engineer	\$220.00	2	\$440.00
		Julien: Project Manager	\$148.00	4	\$592.00
	Lawrence PM	Infinity: Projec Manager	\$235.00	4	\$940.00
	Gholston, Kelly, ME I	Infinity: Mech Engr I	\$190.00	4	\$760.00
	Torres, EE II	Infinity: Elec Engr II	\$170.00	4	\$680.00
		Dana Brown: Principal In Charge	\$250.00	2	\$500.00
		Dana Brown: Project Manager	\$200.00	8	\$1,600.00
		Palacio	\$200.00	0	\$0.00

TASKS	KEY ACTIVITIES	STAFF	RATE	HOURS	LABOR BUDGET
TASK 5 - Provide Documentation	Incorporate data and layouts into 5 hub concepts	Manning: Strategic Oversight	\$350.00	0	\$0.00
	Review meeting and update final document	Manning: Principal in Charge	\$275.00	4	\$1,100.00
		Manning: Project Manager	\$200.00	16	\$3,200.00
		Manning: Project Architect	\$175.00	42	\$7,350.00
		Manning: Urban Planner	\$150.00	48	\$7,200.00
		Manning: Architectural Assoc. II	\$115.00	24	\$2,760.00
		Julien: Principal Engineer	\$220.00	2	\$440.00
		Julien: Project Manager	\$148.00	2	\$296.00
		Infinity: Projec Manager	\$235.00	0	\$0.00
		Infinity: Mech Engr I	\$190.00	2	\$380.00
		Infinity: Elec Engr II	\$170.00	4	\$680.00
		Dana Brown: Principal In Charge	\$200.00	4	\$800.00
		Dana Brown: Project Manager	\$150.00	12	\$1,800.00
		Palacio	\$200.00	25	\$5,000.00
TASK 6 - Complete FTA Environmental Requirements	Coordination with FTA to ascertain requirements throughout project duration	Manning: Strategic Oversight	\$350.00	0	\$0.00
	Documentation and draft CE Checklist	Manning: Principal in Charge	\$275.00	0	\$0.00
	Review with RTA	Manning: Project Manager	\$200.00	2	\$400.00
	Final CE Checklist	Manning: Project Architect	\$175.00	2	\$350.00
		Manning: Urban Planner	\$150.00	12	\$1,800.00
		Manning: Architectural Associate II	\$115.00	8	\$920.00
		Julien: Principal Engineer	\$220.00	1	\$220.00
		Julien: Project Manager	\$148.00	4	\$592.00
		Infinity: Projec Manager	\$235.00	0	\$0.00
		Infinity: Mech Engr I	\$190.00	4	\$760.00
		Infinity: Elec Engr II	\$170.00	4	\$680.00
		Dana Brown: Principal In Charge	\$250.00	0	\$0.00
		Dana Brown: Project Manager	\$200.00	0	\$0.00
		Terracon: Project Manager	\$189.05	39	\$7,372.95
		Terracon: QA/QC	\$143.75	3	\$431.25
		Terracon: Cultural Resources	\$123.59	24	\$2,966.16
	Palacio	\$200.00	0	\$0.00	
TOTAL LABOR				613.5	\$104,837.36

Estimated Reimbursable Expenses

\$10,483.04

TOTAL FEE

\$115,320.40

Labor Summary By Phase

TASK	Manning	Julien	Infinity	Dana Brown	Palacio	Terracon	Labor
1	\$13,125.00	\$736.00	\$1,190.00	\$2,250.00	\$0.00	\$0.00	\$17,301.00
2	\$10,000.00	\$0.00	\$0.00	\$0.00	\$0.00	\$0.00	\$10,000.00
3	\$12,460.00	\$736.00	\$720.00	\$1,450.00	\$0.00	\$0.00	\$15,366.00
4	\$9,160.00	\$1,032.00	\$2,380.00	\$2,100.00	\$0.00	\$0.00	\$14,672.00
5	\$21,610.00	\$736.00	\$1,060.00	\$2,600.00	\$5,000.00	\$0.00	\$31,006.00
6	\$3,470.00	\$812.00	\$1,440.00	\$0.00	\$0.00	\$10,770.36	\$16,492.36
	\$69,825.00	\$4,052.00	\$6,790.00	\$8,400.00	\$5,000.00	\$10,770.36	\$104,837.36

Thank You!



Dallas | New Orleans | Washington DC



August 18, 2023

New Orleans Regional Transit Authority

**RE: RTA Transfer Hub Programming
Project # 2023-PS-01, RTP # 2023-01
Manning, APC Proposal**

Dear Ms. Farley:

Thank you for reaching out to us. In response to your conversation with Dominic Willard, this is a letter of notification that Terracon will be removed from our team.

Thank you for the opportunity to make this clarification.

Sincerely,
Manning, APC

A handwritten signature in blue ink, appearing to read "Wm. Manning", is written over a horizontal line. The signature is fluid and cursive, with a large loop at the end.

Wm. Raymond Manning, FAIA
LEED AP BD+C
Founder | CEO

RE: RTA Transfer Hub Programming Manning Clarification Response

Tighe Kirkland <tbk@manning.xyz>

Tue 8/22/2023 7:15 AM

To: Farley, Joanna <jfarley@rtaforward.org>

Cc: Katie F. Carter <kfc@manning.xyz>; Lisa C. Herron <lch@manning.xyz>; Dominic A. Willard <daw@manning.xyz>

Joanna,

We will simply remove those funds. Thank you.

Best,

Tighe

MANNING
Architecture Interiors Planning

Tighe B. Kirkland

Principal

650 Poydras Street, Ste. 1250
New Orleans, LA 70130-6101
t 504 412 2000 f 504 412 2001

tbk@manning.xyz

manning.xyz

Dallas | New Orleans | Washington D.C

STATEMENT OF CONFIDENTIALITY:

The information contained in this e-mail is confidential and privileged. This e-mail is intended to be reviewed by only the individual or organization named above. If you are not the intended recipient or an authorized representative of the intended recipient, you are hereby notified that any review, dissemination or copying of this e-mail and its attachments, if any, or the information contained herein is prohibited. If you are not the intended recipient, please notify Manning, APC immediately at either 504-412-2000 or notify the sender by return email and destroy all copies of this message and any attachments.

From: Farley, Joanna <jfarley@rtaforward.org>

Sent: Monday, August 21, 2023 4:11 PM

To: Tighe Kirkland <tbk@manning.xyz>

Cc: Katie F. Carter <kfc@manning.xyz>; Lisa C. Herron <lch@manning.xyz>; Dominic A. Willard <daw@manning.xyz>

Subject: Re: RTA Transfer Hub Programming Manning Clarification Response

****CAUTION: This email came from outside of the company.**

Please exercise caution when opening attachments, clicking links or responding to this email. **

Thank you, Tighe.

Regarding the funds that were budgeted for Terracon, can you please let us know if you intend to remove or reallocate those funds?

Thanks,

Joanna

From: Tighe Kirkland <tbk@manning.xyz>

Sent: Friday, August 18, 2023 12:45 PM

To: Farley, Joanna <jfarley@rtaforward.org>

Cc: Katie F. Carter <kfc@manning.xyz>; Lisa C. Herron <lch@manning.xyz>; Dominic A. Willard <daw@manning.xyz>

Subject: RTA Transfer Hub Programming Manning Clarification Response

Dear Ms. Farley,

Per your conversation with Dominic Willard, please see attached letter removing Terracon from our team. Please let me know if this is sufficient for your documentation purposes. Thank you for the opportunity to make this clarification.

Best,
Tighe

MANNING
Architecture Interiors Planning

Tighe B. Kirkland

Principal

650 Poydras Street, Ste. 1250
New Orleans, LA 70130-6101
t 504 412 2000 f 504 412 2001

tbk@manning.xyz

manning.xyz

Dallas | New Orleans | Washington D.C

STATEMENT OF CONFIDENTIALITY:

The information contained in this e-mail is confidential and privileged. This e-mail is intended to be reviewed by only the individual or organization named above. If you are not the intended recipient or an authorized representative of the intended recipient, you are hereby notified that any review, dissemination or copying of this e-mail and its attachments, if any, or the information contained herein is prohibited. If you are not the intended recipient, please notify Manning, APC immediately at either 504-412-2000 or notify the sender by return email and destroy all copies of this message and any attachments.