

Capital Projects Report
Submitted to
Finance Committee
July 2021



Table of Contents

Table of Contents.....	1
Financial Overview	2
Community Meetings.....	2
Bid Openings	2
Project Status	3
NORTA Shelter Program.....	3
Riverfront Streetcar Line: Track Replacement and Pole Painting Project.....	3
Riverfront Streetcar Line: Track Replacement and Pole Painting Project (Con't).....	4
Canal Street Ferry Terminal.....	4
Broken Sewer Line at Randolph Building	5
ENO Phase II- Exterior Envelope Repair.....	5
Napoleon Facility Renovation and Rebuild	6
Algiers Ferry Terminal Rehabilitation and Modernization.....	6
Algiers Ferry Terminal Rehabilitation and Modernization (Con't).....	7
FEMA Emergency Response	7
Rampart Streetcar Line: Recovery Project.....	7
Rampart Streetcar Line: Recovery Project (Con't).....	8
St. Charles Streetcar Line: Double Crossover Replacement Project.....	8
St. Charles Streetcar Line: Downtown Loop Pavement Replacement Project Phase 2	9
East to West Bank Bus Rapid Transit Feasibility Study	10

Financial Overview

The RTA has \$35,910,825 million in open contracts for the capital program after issuing \$289,000 in new contracts and \$265,938 in change orders or amendments. No contracts were closed during the period of May 15 through June 15, 2021.

Community Meetings

Bid Openings

Bids Opened during May 15 – June 15

- Canal Streetcar Line Recovery (Rampart Phase 1)

The following projects are scheduled to bid in the next 60 days:

- Napoleon Facility Renovation and Rebuild
- St. Charles Streetcar Line: Downtown Loop Pavement Replacement Project Phase 2
- Rampart Streetcar Line Recovery
- OCS Pole Replacement
- Preplaced Construction Contractor for Emergency Purposes
- Facility Maintenance and Construction Support Services
- Transit Stop Amenities Shelter Maintenance Support Services

Project Status

(Forecasted dates only include the next project phase)

NORTA Shelter Program

Citywide

Scope of work: Installation of Public Shelters

Funding Source: FTA Formula Grants, RTA Match

Professional Services– Vector Media Transit, LLC

Contractor – Vector Media Transit, LLC

Construction Phase

- Phase 1 - Completed 24 Shelters
- Phase 2 - 17 Shelters
 - Installation Completed - 12
 - On Hold -
 - * Locations- 5
 - * 4 - Hard Rock Location
 - * 1 - Location to be determined
- Staff is reviewing the locations of the shelters that are on hold as part of the return to service plan.



Substantial Completion Date: TBD

Grant Expiration Date: Extension to be requested

Riverfront Streetcar Line: Track Replacement and Pole Painting Project

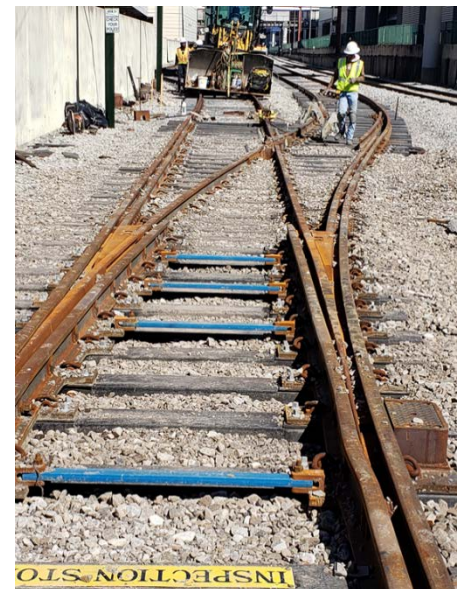
Riverfront New Orleans, LA 70119

Scope of work: Replace the number 6 turnout at John Churchill Chase and Painting of 108 poles along the Riverfront

The Project is split into two phases to mitigate impacts to streetcar service:

- Phase 1 will occur between Canal St. to Convention Center Blvd., encompassed track installation and OCS pole painting, and is complete.
- Phase 2 will occur between Canal St. To French Market., will encompass pole painting and rail tampering, start in July/August 2021, and is expected to take 60 Days to complete.

As the project is under budget, RTA Staff are working with Pointer Smith to include painting of the Riverfront Shelters and repairing the damaged Poydras station.



Riverfront Streetcar Line: Track Replacement and Pole Painting Project (Con't)

Funding Source: FTA Formula, RTA Match

Professional Services: Infinity Engineering

Special Trackwork Fabricator: - Nortrak

Contractor: – Pointer Smith

Construction Phase

- Pointer Smith Mobilized to the site on February 1st and are 60% complete. Phase 1 is complete.
- Phase 2 Start Date: July 1st, 2021.

Substantial Completion: Anticipated November 2021

Grant Expiration Date: N/A

Canal Street Ferry Terminal

1 Canal Street, New Orleans, LA 70130

Scope of work: Construct new ferry terminal and associated infrastructure.

Funding Source – FTA Competitive and TIGER Grants, State, City, RTA Match

Professional Services – Infinity Engineering, Royal Engineers

Contractor – Woodward-APC JV

Construction Phase

- Construction NTP – September 10, 2020
- Construction is expected to take 2 years.

Demolition Phase (80% Complete)

- Demolition of the Arcade wall is ongoing and will be 100% last week of June 2021. The permanent power service for the ferry building coordination continues with Entergy regarding electric underground service inquiry and the installation of metering, 100A, 208A shore power, transformer for fire pump, building, and special events have been finalized and is expected to start soon.

Opening of Temporary Ferry Berthing (70% Complete) – September 2021

- Gangway materials are being delivered as well still waiting on a variety of materials, but fabrication has started and is on schedule. Also, Gangway gates are being priced.
- Temporary Barge refurbishment and additional repairs are 80% complete and overtime cost (OT) cost has been approved.
- Due to the long lead times for the gangway fabrication, as well as the additional repairs, the opening of the Temporary berthing is expected to be opened in September 2021.

Substantial Completion Date – June 2022 Contractual

Grant Expiration Date – September 2022



Broken Sewer Line at Randolph Building

2817 Canal St. New Orleans, LA 70119

Scope of work: Repair broken oily waste water lines and lube oil lines located under the concrete slab.

Funding Source: Katrina Insurance

Professional Services: Infinity Engineering

Contractor: – Industrial and Mechanical Contractors, Inc



Construction Phase

- Project began on May 24, 2021.
- During excavation waste oil was discovered in the removed soil.
- Environmental samples are being analyzed in a lab to determine disposal methods.
- The below grade piping has been replaced for the first two bays north of the breezeway.
- Compaction and cement replacement for these two bays will begin in early July.

Substantial Completion Date: Anticipated September 11, 2021.

Grant Expiration Date: Not Applicable

ENO Phase II- Exterior Envelope Repair

3900 Desire Parkway New Orleans, LA 70126

Scope of work: Waterproofing of the exterior of the maintenance building.

Funding Source: FTA Formula

Professional Services: CDM Smith

Contractor: – TBD

Procurement Phase

- At the June's Board Meeting, approval was granted to award a contract to CDW Services, Inc. A purchase order will be produced. Once a signed contract is received, Notice to Proceed (NTP) will be conveyed to CDW Services, Inc.

Construction Phase

- Anticipated Start Date: August 2021

Substantial Completion: Six months

Grant Expiration Date: TBD



Napoleon Facility Renovation and Rebuild

403 Napoleon Ave, New Orleans, LA

Scope of work: Renovate and Upgrade the Historic Napoleon Ave. Building.

Funding Source: FTA, FEMA

Professional Services: Landmark Consulting

- 100% Construction Documents Received – November 12, 2020
- Documents are being reviewed for compliance with grant requirements.

Contractor – TBD

Procurement Phase

- Advertisement – May 20, 2021
- Anticipated Bid Opening – July 9, 2021

Construction Phase

- Anticipated NTP ---September 2021
 - Anticipated Substantial Completion Date: December 2022
 - Grant Expiration Date: Grant Extension will be requested once bids received per FEMA.



Algiers Ferry Terminal Rehabilitation and Modernization

138 Morgan Street, New Orleans, LA 70114

Scope of work: Renovate and Upgrade the 40-year-old Algiers Ferry Terminal which will include upgrading its barge to accommodate the new catamaran ferries.

Funding Source: FTA Competitive, RTA Match

Professional Services: Infinity Engineering

- Barge Assessment Report - November 2020
- Staff is currently working with FTA to determine the next steps based upon the recommendation to execute this project in two phases.

Contractor: – TBD



Algiers Ferry Terminal Rehabilitation and Modernization (Con't)

Procurement Phase

- Anticipated advertisement dates -- TBD
- Anticipated Bid Opening – TBD

Construction Phase

- Anticipated NTP --TBD

Substantial Completion Date: TBD

Grant Expiration Date: March 30, 2022

FEMA Emergency Response

Scope of work: – Reimbursement for Category B Expenses

Funding Source – FEMA

- COVID-19
- Hurricane Laura
- Hurricane Sally
- Hurricane Zeta



FEMA

Rampart Streetcar Line: Recovery Project

Scope of work: To rehabilitate portions of the Rampart Streetcar Line and Canal Streetcar line that were impacted by the Hard Rock Hotel Collapse.

Funding Source: RTA Self-Generated

Professional Services: AECOM

Contractor: – Barnes Electric

Damage Inspections and Assessments:

- AECOM completed inspections of the Rampart Line on April 23rd.

Rampart Streetcar Line: Repair Plans Design Phase

- AECOM has completed their inspection of the Rampart Streetcar Line. AECOM to provide RTA final package delivery dates.

Procurement Phase

Canal Streetcar Line

- Canal Streetcar Line Repair bid received May 24, 2021. Approved by Board on May 25; however lowest bid exceeded \$270k threshold and will return to Board in July to approve adjusted amount.

Rampart Streetcar Line: Recovery Project (Con't)

Rampart Streetcar Line

- Anticipated OCS Pole Procurement Dates: June 2021 – October 2021
- Anticipated OCS Procurement Bid Opening: July 2021
- Anticipated Construction advertisement: August 2021

Construction Phase

- Anticipated NTP to Repair Canal Line: July 2, 2021
- Canal Streetcar Line: Revenue Service: August 2021
- Rampart Streetcar line: November 2021

Substantial Completion Date: TBD

Grant Expiration Date: N/A

St. Charles Streetcar Line: Double Crossover Replacement Project

Scope of work: The Double Crossover at the intersection of S. Carrollton and S. Claiborne is past its useful life and needs to be replaced.

Funding Source: FTA and RTA Self-Generated

Trackwork Procurement: voestalpine Nortrak

Professional Services: Infinity Engineering

Contractor: – TBD

Trackwork Procurement Phase:

- Procurement has been placed on hold to revise the trackwork to improve ADA compliance. Infinity submitted the revised procurement package on 3/15, which has been approved by RTA. Package to be sent to Nortrak for repricing on 3/29.

Design Phase:

- RTA has selected a plan which brings the adjacent streetcar station into further ADA compliance. Infinity was given then NTP to complete the design on February 15th.
- Infinity will be coordinating with stakeholders at the City of New Orleans on the design to minimize the impact on traffic during construction.

Construction Phase:

- Due to lack of funding, and long lead times for trackwork, Anticipated Construction Start date is 4th Quarter 2022

St. Charles Streetcar Line: Downtown Loop Pavement Replacement Project Phase 2

Scope of work: The project objective is to remove deteriorating asphalt pavement along the tracks throughout the entire downtown loop of St. Charles Streetcar Line and replace it with concrete in order to improve driving conditions and eliminate constantly required asphalt repairs. Due to resources limitations, the project was split into two phases. Phase 1 (which is complete) encompasses pavement replacement along both St. Charles Ave. and Carondelet St. from Julia St. to Poydras St., while Phase 2 encompass pavement replacement along the rest of the loop.

Funding Source: RTA Self-Generated

Professional Services: Infinity Engineering

Contractor: – TBD



Phase 2 Design Phase:

- 100% Design has been completed. RTA Staff to meet with DPW on 4/27 to discuss project timing, permitting, and traffic control plans.

Procurement Phase:

- As the project will require a shutdown of service in this corridor, RTA Staff have determined that a July start date, or when the Canal Streetcar Line fully reopens.
- Bid Phase Dates: May 25 2021 – June 7 2021
- Anticipated Contract Award Date: August 2021

Construction Repair Plan:

- Anticipated Construction Start Date: August 2021
- Anticipated Construction Completion Dates: 5 Months from receipt of Notice to Proceed

East to West Bank Bus Rapid Transit Feasibility Study

Scope of work: This project will develop the first Bus Rapid Transit (BRT) corridor for the RTA. The first phase will develop design standards to be used for all BRT corridors. The next phase will develop several corridor alignment alternatives and identify a preferred alternative based on performance potential and community feedback. The project will include 15% conceptual design of the preferred alignment and stations and provide preliminary environmental survey and funding analysis for FTA grant funding.

Funding Source: FTA and RTA Self-Generated

Professional Services: Integrated Logistical Support Inc.

Contractor: – TBD

Feasibility Phase:

- NTP anticipated early July 2021
- 15% Design estimated for April 2022

Detailed Design Phase:

- Estimated late 2022, contingent on grant funding.

Procurement Phase: N/A

Construction Phase: N/A

Lower Algiers Car Ferry Landing Barge Environmental Assessment

7320 N. Patterson Dr.; New Orleans, LA 70131

Scope of Work:

The RTA has been awarded a Federal Grant to rehabilitate the Car Ferry Terminal and Maintenance Barge located in Lower Algiers Neighborhood, New Orleans, LA. As part of the grant requirements by FTA associated with the proposed facility rehabilitation, the RTA has contracted with an On-Call Engineering firm to assist with the Section 106 review process, including but not limited to the completion of a Cultural Resources Assessment Survey (CRAS) of the Lower Algiers Ferry Terminal and Maintenance Facility.

Funding Source: FTA Competitive Grant

Professional Services: Integrated Logistical Support, Inc. (ISLI)

Schedule: July 2021 – Deliverables: Cultural Resources Report, FTA Region 6 Categorical Exclusion Worksheet, and FTA Initiation Letter

Installation of New Non-Advertising Bus Shelters

Various locations

Scope of Work:

The purchase and installation of approximately 16 new non- advertising bus shelters.

Funding Source: FTA funded.

Professional Services: Infinity Engineering

Next Steps:

Staff identified 42 possible bus stop locations for installation of shelters. The A/E firm with the RTA staff will establish a selection criterion that has the engagement of RTA riders. The A/E firm will prepare a construction package for shelter installation.

Schedule:

March 2021 - Request of Proposal from On-Call A/E Firm

April 2021 - RFP responses due; Procurement evaluation

May 2021 - Notice to Proceed to A/E Firm

December 2021 - A/E Firm 100% Documents Due

January 2022 - Advertise for Construction

April 2022 - NTP to Construction Company

Open Projects (as of June 28, 2021)						
Project	Contractor/Professional Service	Funding Sources	% Local Revenue	Original Contract Amount	Change Order Amendments	Total Contract Amount
Fixed Guideway						
Hard Rock Hotel Collapse	AECOM			\$ 63,890	\$ 126,680	\$ 190,569
	Barnes Electric			\$ 289,000	\$ -	\$ 289,000
Hard Rock Hotel Collapse Total		RTA	100%			\$ 479,569
Downtown Loop Track Replacement (St. Charles)	Infinity Engineering (Ph1 &2)			\$ 96,419	\$ 7,317	\$ 103,736
	Ph2 Contractor (TBD)			\$ -	\$ -	\$ -
Downtown Loop Track Replacement (St. Charles) Total		FTA Formula	20%			\$ 103,736
Carrolton-Claiborne Double Crossover (St. Charles)	Infinity Engineering			\$ 29,810	\$ 81,948	\$ 111,758
	CDM Smith			\$ 34,840	\$ -	\$ 34,840
	Nortrak			\$ 1,294,680	\$ -	\$ 1,294,680
Carrolton-Claiborne Double Crossover (St. Charles) Total		FTA Formula	20%			\$ 1,441,278
Special Trackwork Replacement, Tamping Rail Line and Repaint OCS Poles & Arms (Riverfront)	Infinity Engineering			\$ 123,182	\$ 18,031	\$ 141,213
	Nortrak			\$ 376,969	\$ -	\$ 376,969
	Pointer Smith			\$ 650,000	\$ 114,269	\$ 764,269
Special Trackwork Replacement, Tamping Rail Line and Repaint OCS Poles & Arms (Riverfront) Total		FTA Formula	20%			\$ 1,282,450
ADA Modification (St. Charles)	Infinity Engineering			\$ 161,200		\$ 161,200
	CEA with City			\$ -	\$ -	\$ -
ADA Modification (St. Charles)		RTA	100%			\$ 161,200
BRT Feasibility Study	Professional Services - ISLI, Inc.		8%	\$ 599,949	\$ -	\$ 599,949
		FTA Competitive				\$ 599,949
Facilities						
Napoleon Avenue Building Renovation and Upgrade	Landmark Consulting			\$ 281,461	\$ 170,356	\$ 451,817
	Contractor (TBD)			\$ -	\$ -	\$ -
Napoleon Avenue Building Renovation and Upgrade Total		FEMA, FTA Formula	0%			\$ 451,817
Broken Sewer Line (Randolph Bldg.)	Professional Service - Infinity			\$ 19,000		\$ 19,000
	Industrial and Mechanical Contractors, Inc			\$ 238,795		\$ 238,795
Broken Sewer Line (Randolph Bldg.) Total		RTA - Insurance	100%			\$ 257,795
ENO Exterior Envelope Repairs Phase 2	Professional Service - CDM Smith			\$ 49,888		\$ 49,888
	Contractor (TBD)			\$ -		\$ -
ENO Exterior Envelope Repairs Phase 2 Total		FTA Formula	20%			\$ 49,888
Ferry						
	Infinity Engineering			\$ 447,000	\$ 889,598	\$ 1,336,598

Open Projects (as of June 28, 2021)						
Project	Contractor/Professional Service	Funding Sources	% Local Revenue	Original Contract Amount	Change Order Amendments	Total Contract Amount
Canal St. Ferry Terminal (Design-Bid-Build)	Manning Architect			\$ 928,100	\$ (45,801)	\$ 882,299
	GOTECH Inc.			\$ 246,500	\$ (12,741)	\$ 233,759
	Kenall			\$ 390,342	\$ (215,028)	\$ 175,314
Canal St. Ferry Terminal (CMAR)	Infinity Engineering			\$ 996,200	\$ 652,682	\$ 1,648,882
	Royal Engineering			\$ 496,242	\$ 1,732,618	\$ 2,228,860
	Nortrak			\$ 2,059,388	\$ -	\$ 2,059,388
	Woodward			\$ 180,000	\$ -	\$ 180,000
	APC			\$ 61,000	\$ 61,000	\$ 122,000
	Contractor: Woodward			\$ 22,928,688	\$ 784,622	\$ 23,713,310
	WGI			\$ 9,500	\$ -	\$ 9,500
Canal St. Ferry Terminal Total		FTA Competitive, State, City, RTA	20%			\$ 29,961,940
Algiers Ferry Terminal Rehabilitation and Modernization	Professional Service - Infinity Engineering			\$ 254,200		\$ 254,200
	Contractor (TBD)					\$ -
Algiers Ferry Terminal Rehabilitation and Modernization Total	TBD	FTA Competitive				\$ 254,200
Lower Algiers Car Ferry Terminal and Maintenance Barge Environmental Assessment	Professional Services - ISLI, Inc.	FTA		\$ 44,855		\$ 44,855
A/E for Non-Ad Bus Shelters	Professional Service - Infinity Engineering			\$ 55,484	\$ -	\$ 55,484
	Contractor - TBD					
		RTA				\$ 55,484
Installation of Bus Shelters	Vector Media Transit, LLC (previously Laura Communications)			\$ 766,663	\$ -	\$ 766,663
Bus Shelters Phase 1 and 2 Total		FTA	20%			\$ 766,663
Studies						
				\$ 34,173,246	\$ 4,365,550	\$ 35,910,825

REGIONAL TRANSIT AUTHORITY FEMA Applicant I.D. #: 071-UXQ34-00 Disaster: 1603 Total Number: 117 Date: 6/24/2021														
PW No.	Version No.	PW Ref. No.	Cat.	Total Estimated Amount of Repair	FEMA Estimated Portion	Estimated Insurance Portion	Project Size	Brief Description	Location	Total Reimbursement to Date	Reimbursement Money Received	Administrative Fee Received	PW No. (Roll Up's)	Close Status
3784	4	E-12	E	\$242,452.28	\$242,452.28		L	Park N Ride Lot and Facility	Park N Ride	\$191,983.61	\$190,757.05	\$1,226.56	3784	Pending FEMA
4159	4	E-10	E	\$949,383.00	\$949,383.00		L	Napoleon Facility (Historic)	Napoleon	\$0.00	\$0.00	\$0.00	4159	Open
20328	1	IP1687	E	\$7,407,526.84	\$6,237,938.13	\$1,169,588.71	L	Contents Roll Up (Contents Roll Up)	General	\$6,269,127.82	\$6,237,938.13	\$31,189.69	20328	Open - All funds reimbursed
21034		DAC/COI	0	\$221,666.99	\$221,666.99		L	DAC/COI Costs	General	\$222,743.38	\$221,635.21	\$1,108.17	21034	Open
697	3	E-09	E	\$15,119.28	\$15,119.28		S	Napoleon Facility (New)	Napoleon	\$15,244.87	\$15,119.28	\$125.59	697	Closed
734	2	UH-RTA1	B	\$0.00	\$0.00		L	Interim Commercial Housing	Housing	\$10,755.46	\$0.00	\$10,755.46	734	Closed
770	2	B-07	B	\$32,155.00	\$32,155.00		L	Temp Fencing and Security Contract	General	\$32,930.27	\$32,155.00	\$775.27	770	Closed
1023	5	E-13	E	\$86,216.90	\$86,216.90		L	Carrolton Station	Carrollton	\$86,697.99	\$86,216.90	\$481.09	1023	Closed
1143	1	B-04	B	\$46,500.00	\$46,500.00		S	Bus Towing	General	\$46,965.00	\$46,500.00	\$465.00	1143	Closed
1151	1	B-12	B	\$22,890.25	\$22,890.25		S	St. Charles Catenary Measures	St. Charles	\$23,119.15	\$22,890.25	\$228.90	1151	Closed
1167	1	B-10	B	\$10,860.47	\$10,860.47		S	Canal Janitorial	Canal	\$10,969.08	\$10,860.47	\$108.61	1167	Closed
1178	1	B-11	B	\$8,600.00	\$8,600.00		S	Canal Mold Remediation	Canal	\$8,686.00	\$8,600.00	\$86.00	1178	Closed
1319	3	B-16	B	\$0.00	\$0.00		L	Plaza Admin Mold	Plaza	\$5.00	\$0.00	\$5.00	1319	Closed
2004	5	B-15	B	\$34,680.62	\$34,680.62		S	Desire Mold	ENO	\$35,027.42	\$34,680.61	\$346.81	2004	Closed
2063	4	E-17	E	\$0.00	\$0.00		S	Desire Site Work (Rolled Up to 3704)	ENO	\$179.78	\$0.00	\$179.78	3704	Closed
2223	2	B-14	B	\$0.00	\$0.00		S	Canal Duct Seal (Rolled Up to 10026)	Canal	\$0.00	\$0.00	\$0.00	10026	Closed
2254	4	E-07	E	\$0.00	\$0.00		L	Canal Street Facilities (Rolled Up to 10026)	Canal	\$103.64	\$0.00	\$103.64	10026	Closed
2263	3	E-71	E	\$0.00	\$0.00		S	Desire Chassis Wash Building (Rolled Up to 3704)	ENO	\$82.41	\$0.00	\$82.41	3704	Closed
2265	1	B-17	B	\$14,079.16	\$14,079.16		S	Canal Parking Lot Cleanup	Canal	\$14,219.95	\$14,079.16	\$140.79	2265	Closed
2722	4	E-73	E	\$0.00	\$0.00		S	Desire Vault/Guard Shack Building (Rolled Up to 3704)	ENO	\$0.00	\$0.00	\$0.00	3704	Closed
2731	3	E-70	E	\$0.00	\$0.00		S	Desire Bus Wash Station Building (Rolled Up to 3704)	ENO	\$0.00	\$0.00	\$0.00	3704	Closed

REGIONAL TRANSIT AUTHORITY FEMA Applicant I.D. #: 071-UXQ34-00 Disaster: 1603 Total Number: 117 Date: 6/24/2021														
PW No.	Version No.	PW Ref. No.	Cat.	Total Estimated Amount of Repair	FEMA Estimated Portion	Estimated Insurance Portion	Project Size	Brief Description	Location	Total Reimbursement to Date	Reimbursement Money Received	Administrative Fee Received	PW No. (Roll Up's)	Close Status
2735	5	B-18	B	\$149,207.93	\$149,207.93		L	Canal Electric Power Temp	Canal	\$150,922.07	\$149,207.93	\$1,714.14	2735	Closed
2738	3	E-72	E	\$0.00	\$0.00		S	Desire Fuel Building (Rolled Up to 3704)	ENO	\$0.00	\$0.00	\$0.00	3704	Closed
3161	2	A-1	A	\$32,544.03	\$32,544.03		S	Desire Parking Lot Cleanup	ENO	\$32,762.02	\$32,544.03	\$217.99	3161	Closed
3704	9	E-57	E	\$13,720,667.92	\$13,587,689.32	\$132,978.60	L	ENO Repairs (ENO Roll Up)	ENO	\$13,660,143.28	\$13,587,689.32	\$72,453.96	3704	Closed
3714	4	B-21	B	\$250,570.27	\$250,570.27		L	Canal Streetcar Temp Substation	Canal	\$252,625.03	\$250,570.27	\$2,054.76	3714	Closed
3758	3	E-61	E	\$0.00	\$0.00		S	Desire Chassis Wash System (Rolled Up to 3704)	ENO	\$311.50	\$0.00	\$311.50	3704	Closed
3766	3	E-42	E	\$0.00	\$0.00		S	Canal Bus Frame Straightener system (Rolled Up to 10026)	Canal	\$37.73	\$0.00	\$37.73	10026	Closed
3787	4	E-33	E	\$0.00	\$0.00		L	Canal Air Compressors (Rolled Up to 10026)	Canal	\$351.87	\$0.00	\$351.87	10026	Closed
4039	4	E-29	E	\$0.00	\$0.00		S	Canal Shop Fans (Rolled Up to 20328)	Canal	\$0.00	\$0.00	\$0.00	20328	Closed
4047	5	E-35	E	\$0.00	\$0.00		L	Canal Shop Lathe (Rolled Up to 20328)	Canal	\$0.00	\$0.00	\$0.00	20328	Closed
4062	5	E-08	E	\$0.00	\$0.00		S	Canal Bus Lifts (Rolled Up to 10026)	Canal	\$1,136.50	\$0.00	\$1,136.50	10026	Closed
4093	4	E-14	E	\$0.00	\$0.00		L	Desire Maintenance Building (Rolled Up to 3704)	ENO	\$0.00	\$0.00	\$0.00	3704	Closed
4101	4	E-16	E	\$0.00	\$0.00		S	Desire Office Building (Rolled Up to 3704)	ENO	\$0.00	\$0.00	\$0.00	3704	Closed
4102	1	B-05	B	\$0.00	\$0.00		S	RTA Security	General	\$0.00	\$0.00	\$0.00	4102	Closed
4181	5	E-15	E	\$96,320.00	\$96,320.00		L	Desire Maintenance Doors	ENO	\$96,801.60	\$96,320.00	\$481.60	4181	Closed
4454	3	E-85	E	\$0.00	\$0.00		S	Desire Maintenance Pit Leak (Rolled Up to 3704)	ENO	\$0.00	\$0.00	\$0.00	3704	Closed
4472	5	E-75	E	\$2,098,113.08	\$2,098,113.08		L	Canal Rectifier Permanent	Canal	\$2,118,229.23	\$2,098,113.08	\$20,116.15	4472	Closed
4543	5	B-22	B	\$816,880.44	\$816,880.44		L	Desire Temporary Power	ENO	\$821,475.79	\$816,880.44	\$4,595.35	4543	Closed
4616	4	B-23	B	\$143,094.21	\$143,094.21		L	SIS Temporary Power	Canal/SIS	\$144,093.72	\$143,094.21	\$999.51	4616	Closed
4623	1	E-78	E	\$0.00	\$0.00		S	Canal Cement Slab	Canal	\$0.00	\$0.00	\$0.00	4623	Closed
4777	4	E-79	E	\$0.00	\$0.00		S	Desire Shop Fans (Rolled Up to 20328)	ENO	\$0.00	\$0.00	\$0.00	20328	Closed
4863	3	E-83	E	\$0.00	\$0.00		L	Canal Street - 350kW Diesel Generator Assembly (Rolled Up to 10026)	Canal/SIS	\$424.69	\$0.00	\$424.69	10026	Closed
4864	3	E-36 (E-86)	E	\$0.00	\$0.00		L	Desire Brake Lathe (Rolled Up to 3704)	ENO	\$0.00	\$0.00	\$0.00	3704	Closed

REGIONAL TRANSIT AUTHORITY FEMA Applicant I.D. #: 071-UXQ34-00 Disaster: 1603 Total Number: 117 Date: 6/24/2021														
PW No.	Version No.	PW Ref. No.	Cat.	Total Estimated Amount of Repair	FEMA Estimated Portion	Estimated Insurance Portion	Project Size	Brief Description	Location	Total Reimbursement to Date	Reimbursement Money Received	Administrative Fee Received	PW No. (Roll Up's)	Close Status
4953	5	E-31	E	\$0.00	\$0.00		L	Canal Emergency Generator (Rolled Up to 10026)	Canal	\$1,693.26	\$0.00	\$1,693.26	10026	Closed
5238	4	E-84	E	\$0.00	\$0.00		S	Canal Air Regulator (Rolled Up to 10026)	Canal	\$9.55	\$0.00	\$9.55	10026	Closed
5266	6	B-24	B	\$177,830.40	\$177,830.40		L	Canal Complex - Generators for parking lights and Money Center	Canal	\$179,161.52	\$177,830.40	\$1,331.12	5266	Closed
5270	3	E-82	E	\$0.00	\$0.00		L	Canal Money Room (Rolled Up to 10026)	Canal	-\$0.01	\$0.00	-\$0.01	10026	Closed
5454	3	G-1	G	\$27,702.42	\$27,702.42		S	Riverfront Streetcar Line	Riverfront Line	\$27,979.45	\$27,702.42	\$277.03	5454	Closed
5645	3	E-88	E	\$0.00	\$0.00		S	Desire Compressors (Rolled Up to 3704)	ENO	\$375.93	\$0.00	\$375.93	3704	Closed
5672	3	E-89	E	\$0.00	\$0.00		S	Desire Crack (Rolled Up to 3704)	ENO	\$12.86	\$0.00	\$12.86	3704	Closed
5738	2	E-87	E	\$2,490.00	\$2,490.00		S	Canal Temp Office	Canal	\$2,514.90	\$2,490.00	\$24.90	5738	Closed
6875	5	G-3	G	\$306,125.17	\$306,125.17		L	St. Charles Catenary	St. Charles	\$307,897.18	\$306,125.17	\$1,772.01	6875	Closed
6886	3	E-91	E	\$0.00	\$0.00		L	Desire Generator (Rolled Up to 3704)	ENO	\$0.00	\$0.00	\$0.00	3704	Closed
7303	3	E-34	E	\$0.00	\$0.00		L	Canal Passenger Elevators (Rolled Up to 10026)	Canal	\$0.00	\$0.00	\$0.00	10026	Closed
7336	4	E-80	E	\$0.00	\$0.00		L	Desire Dynamometer (Rolled Up to 20328)	ENO	\$51.27	\$0.00	\$51.27	20328	Closed
7342	3	E-55	E	\$0.00	\$0.00		L	Desire Elevators (Rolled Up to 3704)	ENO	\$0.00	\$0.00	\$0.00	3704	Closed
7358	4	E-32	E	\$0.00	\$0.00		L	Canal Facility Dissolved Air Flotation System (Rolled Up to 10026)	Canal	\$107.66	\$0.00	\$107.66	10026	Closed
7370	4	E-36B	E	\$0.00	\$0.00		S	Canal Miscellaneous Tools (SIS) (Rolled Up to 20328)	Canal/SIS	\$104.29	\$0.00	\$104.29	20328	Closed
7427	3	E-59	E	\$0.00	\$0.00		L	Desire Bus Wash System (Rolled Up to 3704)	ENO	\$0.00	\$0.00	\$0.00	3704	Closed
7496	3	E-20	E	\$0.00	\$0.00		S	Carrollton Contents (Rolled Up to 20328)	Carrollton	\$0.00	\$0.00	\$0.00	20328	Closed
7577	3	E-92	E	\$0.00	\$0.00		S	Desire Air Regulator (Rolled Up to 3704)	ENO	\$0.00	\$0.00	\$0.00	3704	Closed
7667	3	G-4	G	\$0.00	\$0.00		S	Riverfront Streetline Repairs (Rolled to 17764)	Riverfront Line	\$98.89	\$0.00	\$98.89	17764	Closed
7677	4	E-40	E	\$0.00	\$0.00		L	Canal Paint Booth (Rolled Up to 10026)	Canal	\$0.00	\$0.00	\$0.00	10026	Closed
7735	4	E-90	E	\$0.00	\$0.00		S	Desire Part Washer (Rolled Up to 20328)	ENO	\$0.00	\$0.00	\$0.00	20328	Closed
7755	4	E-50	E	\$0.00	\$0.00		L	Plaza Elevators	Plaza	\$0.00	\$0.00	\$0.00	7755	Closed
7842	4	E-2A	E	\$0.00	\$0.00		S	Canal Bus Wash Rack (Rolled Up to 10026)	Canal	-\$0.01	\$0.00	-\$0.01	10026	Closed

REGIONAL TRANSIT AUTHORITY FEMA Applicant I.D. #: 071-UXQ34-00 Disaster: 1603 Total Number: 117 Date: 6/24/2021														
PW No.	Version No.	PW Ref. No.	Cat.	Total Estimated Amount of Repair	FEMA Estimated Portion	Estimated Insurance Portion	Project Size	Brief Description	Location	Total Reimbursement to Date	Reimbursement Money Received	Administrative Fee Received	PW No. (Roll Up's)	Close Status
7929	4	E-48	E	\$0.00	\$0.00	\$131,268.61	L	Canal Telephone System	Canal	\$0.00	\$0.00	\$0.00	7929	Closed
8066	6	E-23A	E	\$0.00	\$0.00		S	Canal Money Counting Inventory (Rolled Up to 20328)	Canal	\$0.00	\$0.00	\$0.00	20328	Closed
8331	6	E-36A	E	\$0.00	\$0.00		L	Canal Miscellaneous Tools (Randolph) (Rolled Up to 20328)	Canal	\$0.00	\$0.00	\$0.00	20328	Closed
8694	4	G-2	G	\$0.00	\$0.00		S	St Charles Streetcar Repairs / Rail Bed	St. Charles	\$0.00	\$0.00	\$0.00	8694	Closed
8862	3	E-49	E	\$0.00	\$0.00		L	Plaza Telephone System	Plaza	\$0.00	\$0.00	\$0.00	8862	Closed
8876	5	E-39	E	\$57,472.00	\$57,472.00		L	Canal Fire Alarm System	Canal	\$57,759.36	\$57,472.00	\$287.36	8876	Closed
8891	5	E-19B	E	\$0.00	\$0.00		L	Canal Electrical Repairs - SIS (Rolled Up to 10026)	Canal/SIS	\$0.00	\$0.00	\$0.00	10026	Closed
10026	8	E-19	E	\$17,625,146.11	\$17,339,990.68	\$285,155.43	L	Canal Electrical Repairs - Site (Canal Roll Up)	Canal	\$17,426,690.64	\$17,339,990.68	\$86,699.96	10026	Closed
10038	3	E-19C	E	\$0.00	\$0.00		L	Canal Electrical Repairs - Money Counting Bldg (Rolled Up to 10026)	Canal	\$0.00	\$0.00	\$0.00	10026	Closed
10110	4	E-52	E	\$0.00	\$0.00		S	Plaza HVAC System	Plaza	\$0.00	\$0.00	\$0.00	10110	Closed
10206	5	E-02C	E	\$5,553,721.27	\$5,553,721.27		L	Riverfront Streetcar Repair / Replacement	Streetcar	\$5,581,489.88	\$5,553,721.27	\$27,768.61	10206	Closed
10464	5	E-02	E	\$17,588,966.49	\$17,588,966.49		L	Canal Streetcar Repair / Replacement	Streetcar	\$17,910,730.66	\$17,821,622.56	\$89,108.10	10464	Closed
10596	5	E-26	E	\$0.00	\$0.00		S	Napoleon Inventory Replacement (Rolled Up to 20328)	Napoleon	\$0.00	\$0.00	\$0.00	20328	Closed
10660	4	E-23B	E	\$0.00	\$0.00		S	Canal SIS Contents (Rolled Up to 20328)	Canal/SIS	\$0.00	\$0.00	\$0.00	20328	Closed
10677	5	E-24A	E	\$0.00	\$0.00		L	Plaza Wind Contents (Rolled Up to 20328)	Plaza	\$0.02	\$0.00	\$0.02	20328	Closed
10681	3	E-68	E	\$0.00	\$0.00		S	Desire Fire Safety Equipment (Rolled Up to 3704)	ENO	\$0.00	\$0.00	\$0.00	3704	Closed
10704	4	PW E-25 (E-25A)	E	\$0.00	\$0.00		S	Desire Maintenance Contents (Rolled Up to 20328)	ENO	\$0.00	\$0.00	\$0.00	20328	Closed
10744	3	E-19A	E	\$0.00	\$0.00		L	Canal Electrical Repairs - Randolph (Rolled Up to 10026)	Canal	\$0.00	\$0.00	\$0.00	10026	Closed
10754	3	E-60	E	\$0.00	\$0.00		S	Desire Bus Fuel Pump System (Rolled Up to 3704)	ENO	-\$0.01	\$0.00	-\$0.01	3704	Closed
10771	3	E-43	E	\$0.00	\$0.00		S	Canal Fuel Pump System (Rolled Up to 10026)	Canal	\$0.01	\$0.01	\$0.00	10026	Closed

REGIONAL TRANSIT AUTHORITY FEMA Applicant I.D. #: 071-UXQ34-00 Disaster: 1603 Total Number: 117 Date: 6/24/2021														
PW No.	Version No.	PW Ref. No.	Cat.	Total Estimated Amount of Repair	FEMA Estimated Portion	Estimated Insurance Portion	Project Size	Brief Description	Location	Total Reimbursement to Date	Reimbursement Money Received	Administrative Fee Received	PW No. (Roll Up's)	Close Status
11711	6	E-23C	E	\$0.00	\$0.00		L	Randolph Building Contents (Rolled Up to 20328)	Canal	\$0.00	\$0.00	\$0.00	20328	Closed
12069	6	E-25C	E	\$0.00	\$0.00		S	Desire Administration Bldg - Contents (Rolled Up to 20328)	ENO	\$0.00	\$0.00	\$0.00	20328	Closed
12099	5	E-27	E	\$384,910.00	\$0.00	\$384,910.00	S	Vehicle Replacement	Vehicles	\$0.00	\$0.00	\$0.00	12099	Closed
12673	6	E-1A	E	\$44,163,383.18	\$41,163,383.18	\$3,000,000.00	L	Damaged Flooded Buses	Buses	\$41,394,652.98	\$41,188,709.42	\$205,943.56	12673	Closed
12757	5	E-27A	E	\$900,245.43	\$0.00	\$900,245.43	S	RTA Specialty Vehicles	Vehicles	\$0.00	\$0.00	\$0.00	12757	Closed
13058	4	E-11	E	\$804,558.00	\$0.00	\$804,558.00	S	Plaza Administrative Building	Plaza	-\$0.01	\$0.00	-\$0.01	13058	Closed
13082	4	E-24	E	\$0.00	\$0.00		L	Plaza Flood Contents (Rolled Up to 20328)	Plaza	\$0.01	\$0.00	\$0.01	20328	Closed
13249	3	E-93	B	\$0.00	\$0.00		S	Plaza Document Restoration	Plaza	\$0.00	\$0.00	\$0.00	13249	Closed
13256	5	E-1B	E	\$5,058.85	\$5,058.85		L	Bus Salvage and Tires	Buses	\$5,084.14	\$5,058.85	\$25.29	13256	Closed
13508	4	E-05	E	\$662,590.32	\$662,590.32		L	Bus Shelters	Bus Stops	\$665,903.27	\$662,590.32	\$3,312.95	13508	Closed
13733	3	E-46	E	\$62,056.00	\$62,056.00		L	Canal Dispatch System	Canal	\$62,366.28	\$62,056.00	\$310.28	13733	Closed
13736	1	B-03	B	\$560,654.84	\$560,654.84		L	Public Evacuation Costs	Emergency	\$563,458.12	\$560,654.84	\$2,803.28	13736	Closed
15820	3	G-05	G	\$0.00	\$0.00		S	Canal Street Car System Repair (Reduced to 10026 & 17764)	Canal Line	\$0.00	\$0.00	\$0.00	10026	Closed
16283	2	E-95	E	\$0.00	\$0.00		S	Canal SIS HVAC (Rolled Up to 10026)	Canal/SIS	\$0.00	\$0.00	\$0.00	10026	Closed
16428	3	E-94	E	\$1,156,230.80	\$1,156,230.80		L	Canal SIS Substation	Canal/SIS	\$1,162,011.95	\$1,156,230.80	\$5,781.15	16428	Closed
16494	2	G-6	G	\$0.00	\$0.00		S	Bus Towing Operations	General	\$0.00	\$0.00	\$0.00	16494	Closed
17168	2	E-99	E	\$0.00	\$0.00		S	Canal Station Lights (Rolled to 17764)	Riverfront Line	\$0.00	\$0.00	\$0.00	17764	Closed
17748	2	PM-3	E	\$0.00	\$0.00		L	ENO Design & Const. Mang. Fees	Engineering	\$0.00	\$0.00	\$0.00	17748	Closed
17749	2	PM-1	E	\$0.00	\$0.00		L	Canal Complex Design & Const. Mang. Fees	Engineering	\$0.00	\$0.00	\$0.00	17749	Closed
17764	3	F-01	F	\$3,235,511.34	\$3,235,511.34		L	Canal Line Splices and Switches	Canal Line	\$3,257,858.47	\$3,241,650.24	\$16,208.23	17764	Closed
18175	4	E-99A	E	\$0.00	\$0.00		S	Tools & Equipment (Rolled Up to 20328)	ENO	\$0.00	\$0.00	\$0.00	20328	Closed
18374	5	ENO-TF-1	TF	\$60,456.48	\$60,456.48		L	Temporary Office Trailers	ENO	\$60,758.76	\$60,456.48	\$302.28	18374	Closed
18700	3	ENOTP	B	\$357,543.66	\$357,543.66		L	ENO Interim Power	ENO	\$359,331.38	\$357,543.66	\$1,787.72	18700	Closed
18828	2	E-110	E	\$1,724,377.00	\$1,724,377.00		L	Randolph 2nd Floor	Office	\$1,732,998.88	\$1,724,377.00	\$8,621.88	18828	Closed
19007	2	E-111	E	\$17,027.98	\$17,027.98		S	Canal UST Clean-out	Canal	\$17,113.12	\$17,027.98	\$85.14	19007	Closed
19167	4	E-115	E	\$666,910.00	\$666,910.00		L	Fareboxes	General	\$670,244.55	\$666,910.00	\$3,334.55	19167	Closed

REGIONAL TRANSIT AUTHORITY FEMA Applicant I.D. #: 071-UXQ34-00 Disaster: 1603 Total Number: 117 Date: 6/24/2021														
PW No.	Version No.	PW Ref. No.	Cat.	Total Estimated Amount of Repair	FEMA Estimated Portion	Estimated Insurance Portion	Project Size	Brief Description	Location	Total Reimbursement to Date	Reimbursement Money Received	Administrative Fee Received	PW No. (Roll Up's)	Close Status
19296	1	AP912	AP	\$5,581,772.00	\$0.00	\$5,581,772.00	L	Plaza/Randolph	Plaza	\$0.00	\$0.00	\$0.00	19296	Closed
19441	2	E-130	E	\$0.00	\$0.00		L	Randolph 2nd Floor Contents (Rolled Up to 20328)	Canal	\$0.00	\$0.00	\$0.00	20328	Closed
19653	5	B-30	B	\$1,154,227.09	\$1,154,227.09		L	Fuel for Generators	ENO	\$1,159,998.21	\$1,154,227.09	\$5,771.12	19653	Closed
20552	1	B-01	B	\$140,900.00	\$140,900.00		L	Desire Portable Compressor & Bus Washers	ENO	\$141,604.50	\$140,900.00	\$704.50	20552	Closed
				\$129,377,395.50	\$117,118,187.33	\$12,390,476.78				\$116,998,217.77	\$116,381,198.53	\$617,019.24		
Open PW Status:														
PW's:														
3784 Park and Ride: Since Phase 2 is currently on hold, an alternate Project was requested. Pending FEMA.														
4159 Napoleon Facility: Received 100% Engineering Package for RTA's review 11/12/2020.														
20328 Contents: Uploading expenses for GOHSEP's approval.														
21034 DAC/COI: Ongoing FEMA closeout consultant.														